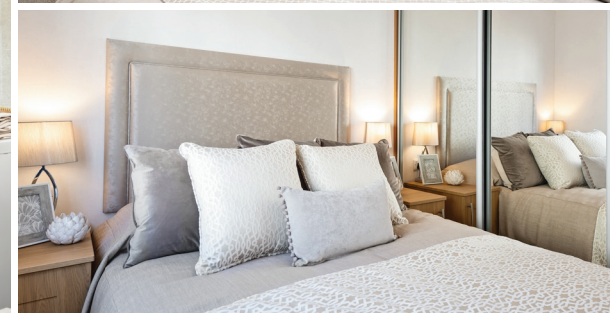


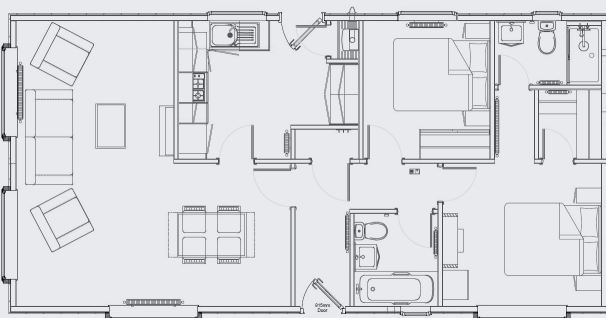
Sonata





FLOORPLAN:

Homes are available up to 65' x 22' in either 1, 2, 3 or 4 bedroom options.



As part of our ongoing development, we reserve the right to change or alter specifications without prior notice. Photographs may show features which are not standard E&OE.

KEY FEATURES:

- Exterior CanExcel feature cladding with a dormer above entrance
- Vaulted ceiling to the lounge, diner & kitchen
- Colour co-ordinated sofa, curtains & carpets
- Fully fitted kitchen & bedroom furniture with en-suite & walk-in wardrobe to master bedroom
- Integrated appliances, four burner gas hob, built-in under oven, dishwasher, fridge/freezer & washing machine
- Dining table including four chairs & coffee table
- Energy efficient A Rated boiler
- Built to British Standard 3632 & protected by a 10 year structural warranty

MORE INFORMATION:

Visit the UK's largest permanent showground to view a selection of residential park homes and holiday lodges.

Open 6 days a week Monday - Saturday
9am - 5pm (excluding bank holidays)
or call our friendly sales team on:

01933 354000 or email sales@phplh.com
www.prestigehomeseeker.com

