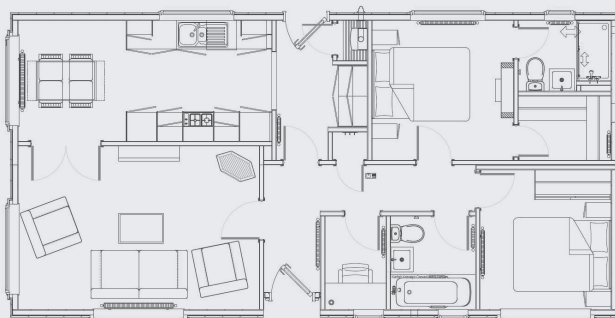


Reprise



FLOORPLAN:

Homes are available up to 65' x 22' in either 1, 2, 3 or 4 bedroom options.



Take a virtual tour of the Reprise visit www.prestigehomeseeker.com

As part of our ongoing development, we reserve the right to change or alter specifications without prior notice. Photographs may show features which are not standard E&OE.

KEY FEATURES:

- Dormer above entrance
- Colour co-ordinated sofa, curtains & carpets
- Fitted electric fireplace
- Fully fitted kitchen & bedroom furniture with walk in wardrobe & en-suite to master bedroom
- Four burner gas hob, eye level oven, dishwasher, fridge/freezer & washing machine
- Energy efficient A Rated boiler
- Built to British Standard 3632 and protected by a 10 year structural warranty

MORE INFORMATION:

Visit the UK's largest permanent showground to view a selection of residential park homes and holiday lodges.

See our website for opening hours
www.prestigehomeseeker.com or call our friendly sales team on:

01933 354000 or email sales@phplh.com
www.prestigehomeseeker.com

