

# Gateforth Park

Residential Park Homes  
for the Over Fifties

**Majestic 42' x 20'  
2 Bedroom**

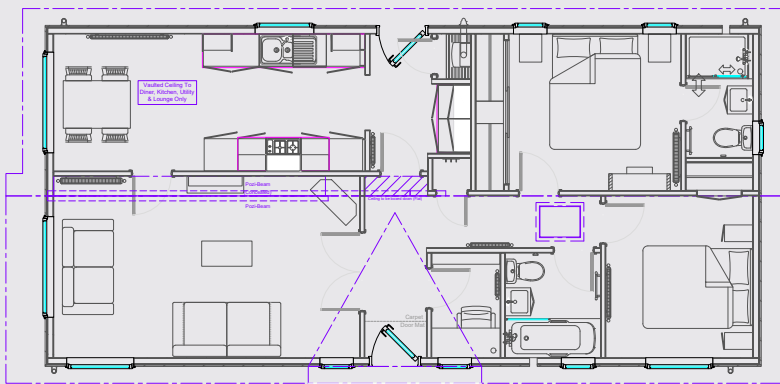
01423 323190 / 07814 923715  
gateforthpark@yhlparcs.co.uk  
www.gateforthpark.co.uk

 Prestige Homeseeker

As part of our ongoing development, we reserve the right to change or alter specifications without prior notice. Photographs are indicative only and may show features which are not standard E&OE.

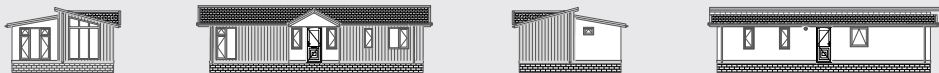


Master Suite features a 5ft (Kingsize) double bed



**KEY FEATURES:**

- Dormer above entrance
- Vaulted ceiling to lounge, kitchen, diner & utility
- Fitted kitchen including four burner gas hob, double electric eye-level oven, fridge/ freezer, integrated washing machine & integrated tumble dryer
- Shower over bath, sink vanity unit & mirrored cabinet
- 5ft (King sized) bed in master bedroom
- Brushed chrome sockets & switches
- Energy efficient A Rated boiler
- Built to exceed British Standard 3632 and protected by a 10 year structural warranty



01423 323190 / 07814 923715 [gateforthpark@yhlparcs.co.uk](mailto:gateforthpark@yhlparcs.co.uk) [www.gateforthpark.co.uk](http://www.gateforthpark.co.uk)

*Gateforth Park*  
Residential Park Homes  
for the Over Fifties