


Gateforth Park

Residential Park Homes
for the Over Fifties

Residence 45' x 20'
£182,250

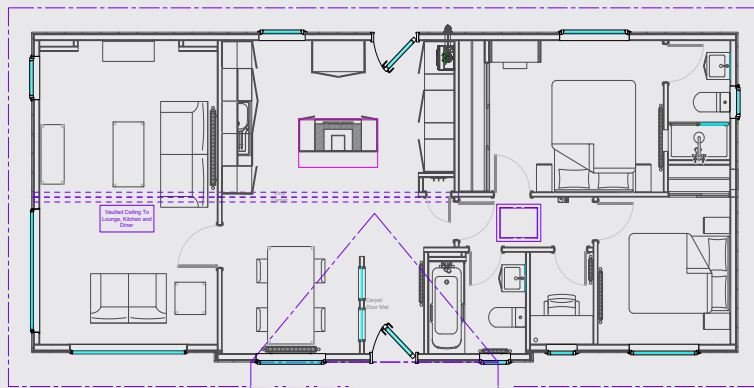
01423 323190 / 07866 225187
gateforthpark@yhlparcs.co.uk
www.gateforthpark.co.uk

 Prestige Homeseeker

As part of our ongoing development, we reserve the right to change or alter specifications without prior notice. Photographs are indicative only and may show features which are not standard E&OE.



Master Suite features a 5ft (Kingsize) double bed



KEY FEATURES:

- Dormer above entrance
- Vaulted ceiling to lounge, kitchen and diner
- Colour co-ordinated sofa, curtains and carpets
- Dining table including four chairs, coffee table, tv cabinet & lamp table
- Fully fitted kitchen and bedroom furniture with walk-in wardrobe & en-suite
- Four burner gas hob, built under oven, microwave, dishwasher, fridge/freezer and washing machine
- Energy efficient A Rated boiler
- Built to British Standard 3632 and protected by a 10 year structural warranty

**BUILT IN
BRITAIN** 



01423 323190 / 07866 225187 gateforthpark@yhlparcs.co.uk www.gateforthpark.co.uk

Gateforth Park
Residential Park Homes
for the Over Fifties