

# Gateforth Park


Residential Park Homes  
for the Over Fifties

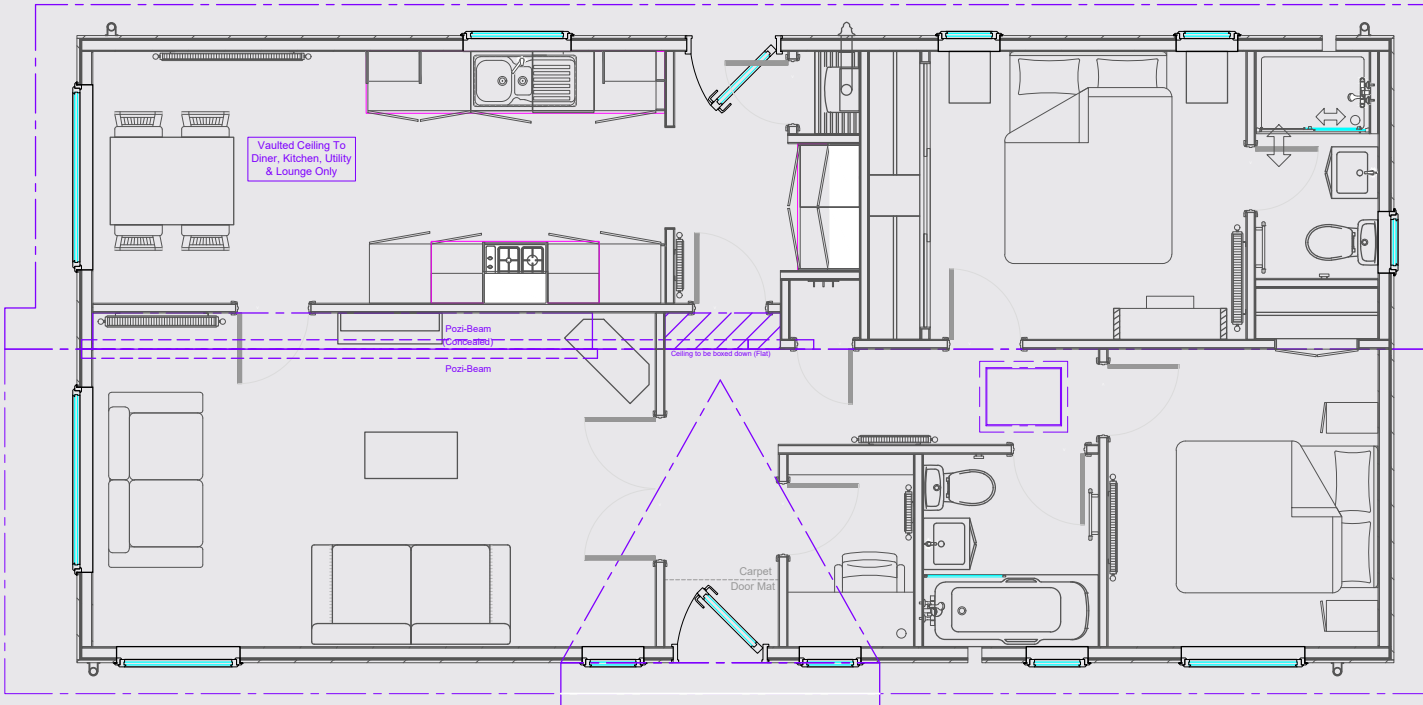
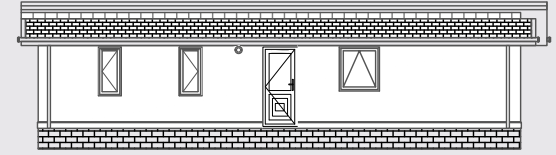
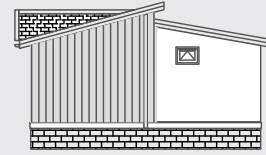
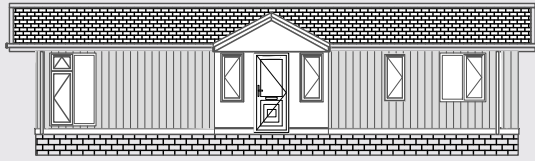
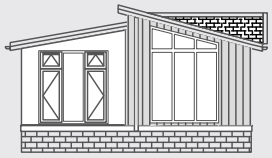
**Majestic 42' x 20'**  
**£184,495**

CGI Image for illustration only



01423 323190 / 07866 225187  
gateforthpark@yhlparks.co.uk  
www.gateforthpark.co.uk

 Prestige Homeseeker



# Gateforth Park

Residential Park Homes  
for the Over Fifties

**The Majestic is a brand new model for 2020 from Prestige Homeseeker Park & Leisure Homes.**

Full specifications and images will be available shortly and our show home will be arriving onsite at Gateforth Park in March.

As part of our ongoing development, we reserve the right to change or alter specifications without prior notice. Photographs are indicative only and may show features which are not standard E&OE.



Mood board showing proposed interior colours and finishes

### KEY FEATURES:

- Dormer above entrance
- Vaulted ceiling to lounge, kitchen, diner & utility
- Fitted kitchen including four burner gas hob, double electric eye-level oven, fridge/ freezer, integrated washing machine & integrated tumble dryer
- Shower over bath, sink vanity unit & mirrored cabinet
- 5ft (King sized) bed in master bedroom
- Brushed chrome sockets & switches
- Energy efficient A Rated boiler
- Built to exceed British Standard 3632 and protected by a 10 year structural warranty



01423 323190 / 07866 225187 [gateforthpark@yhlparcs.co.uk](mailto:gateforthpark@yhlparcs.co.uk) [www.gateforthpark.co.uk](http://www.gateforthpark.co.uk)