


# Gateforth Park

Residential Park Homes  
for the Over Fifties

Accolade 42' x 14'  
£132,500



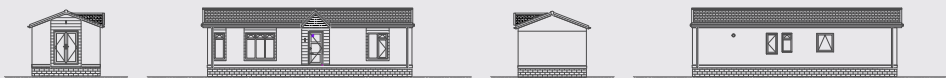
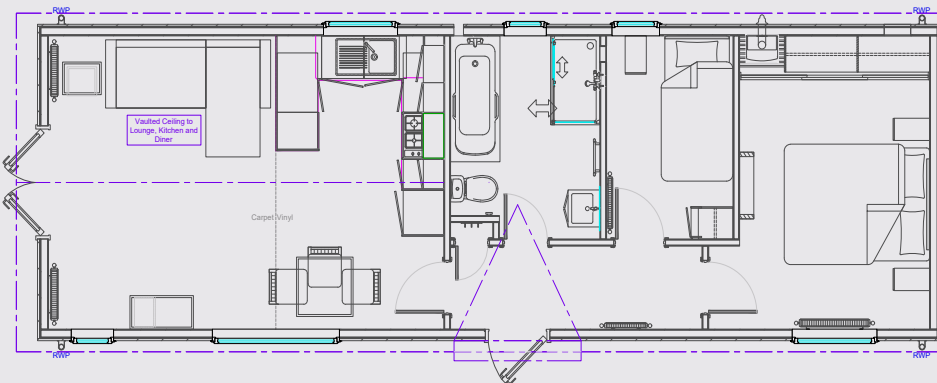
01423 323190 / 07866 225187  
gateforthpark@yhlparcs.co.uk  
www.gateforthpark.co.uk

 Prestige Homeseeker

As part of our ongoing development, we reserve the right to change or alter specifications without prior notice. Photographs are indicative only and may show features which are not standard E&OE.



Master Suite features a 5ft (Kingsize) double bed



#### KEY FEATURES:

- Front balcony, French doors & dormer above entrance
- Vaulted ceiling to lounge & kitchen diner
- Fitted high gloss kitchen including four burner gas hob, built-under oven, fridge/ freezer & washing machine
- Corner chaise sofa, solid oak dining table, tv media unit & nest of tables
- Shower over bath, sink vanity unit & mirrored cabinet
- Sliding mirrored wardrobes to bedroom 1
- Energy efficient A Rated boiler
- Built to exceed British Standard 3632 and protected by a 10 year structural warranty

**BUILT IN  
BRITAIN** 

01423 323190 / 07866 225187 [gateforthpark@yhlparcs.co.uk](mailto:gateforthpark@yhlparcs.co.uk) [www.gateforthpark.co.uk](http://www.gateforthpark.co.uk)

*Gateforth Park*  
Residential Park Homes  
for the Over Fifties